



FSJZ IMPACT DETACHER

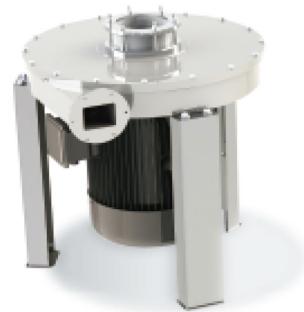
Applicable to pulverization, loosening and dissection of powdery material.

FEATURES

- ▶ The heat treatment hardness of impacting nail achieves HRC38-42 with high wear resistance;
- ▶ Super balance level and stable performance;
- ▶ Long life time and low maintenance cost;
- ▶ Small space requirement and convenient technical arrangement.

TECHNICAL PARAMETER

Model	Capacity(t/h)	Motor(kW)
FSJZ430	1-1.5	3/4/5.5
FSJZ470	13.-1.8	4
FSJZ530	1.5-2.5	5.5/7.5



FMFZ IMPACT MILL

Applicable to pulverization of granular stock in a mill system for a higher flour extraction rate.

FEATURES

- ▶ Small space requirement and convenient technical arrangement; The windward of square-impact nail is welded by tungsten alloy with high wear resistance;
- ▶ Super balance level and stable performance;
- ▶ High flour extraction rate;
- ▶ Long life time and low maintenance cost.

TECHNICAL PARAMETER

Model	Capacity(t/h)	Motor(kW)
FMFZ45	0.5-0.7	7.5-11
FMFZ53	1-1.5	11-15



FPDW BRAN FINISHER

Applicable to unsticking the flour sticking on the bran for a higher flour extraction in the flour milling process of wheat, rye, Spelt wheat, millet, barley, oat or buckwheat.

FEATURES

- ▶ Obliquitous beater for a higher flour extraction;
- ▶ Larger service door for convenient maintenance, operational check and sample collection;
- ▶ Dynamic balance tested rotor assures smoothly running;
- ▶ Rhombic sieve cover prevent the sieve blockage and assure bran finishing efficiency;
- ▶ Low-maintenance design for lower maintenance cost.

TECHNICAL PARAMETER

Model	Capacity(t/h)	Power(kW)
FPDW45	0.9-1.8	5.5
FPDW45×2	1.8-3.5	2×5.5

FEATURES

- ▶ The wider inspection door is good for equipment maintenance like replacing wire screen or brush and convenient to operational check;
- ▶ Excellent leak proofness, with sealing strips applied to the connections to assure no dust flying outside the equipment;
- ▶ Low-maintenance design for lower maintenance cost.

TECHNICAL PARAMETER

Model	Cylindrical Screen Diameter(mm)	Cylindrical Screen Length(mm)	Capacity (t/h)	Power (kW)
FFPS38×75B	φ380	750	1-1.5	0.75
FFPS38×85B	φ380	850	1.5-2	0.75
SFJ38×85A	φ380	850	2-2.5	1.5



FFPS BRAN BRUSHER

Applicable to processing the powders adherent to the bran flakes in the downstream flour milling process, so as to reduce the burden on the subsequent break roller mill.